

It's quite easy, there is NO NEED to build the source, I did that for you and you can find the files in my GitHub "[Releases](#)".

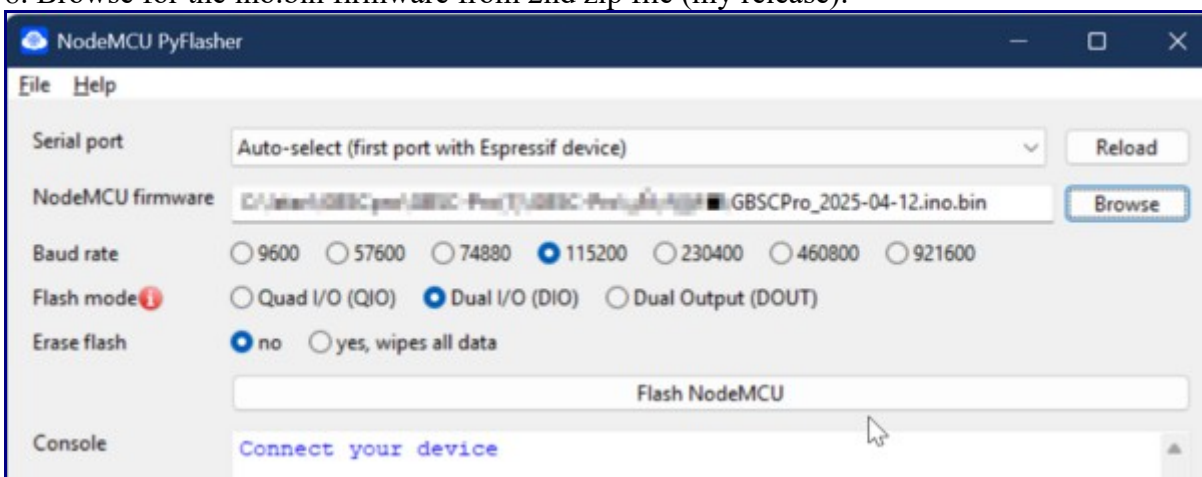
1. You will need: usb to usb-c cable, usb to microusb cable, windows 10/11 machine, gbesc-pro
2. Download latest official release from here: <https://github.com/RetroScaler/gbesc-pro/releases> currently it is gbesc pro v1.2, go for zip file

GBSC_PRO.V1.2.zip

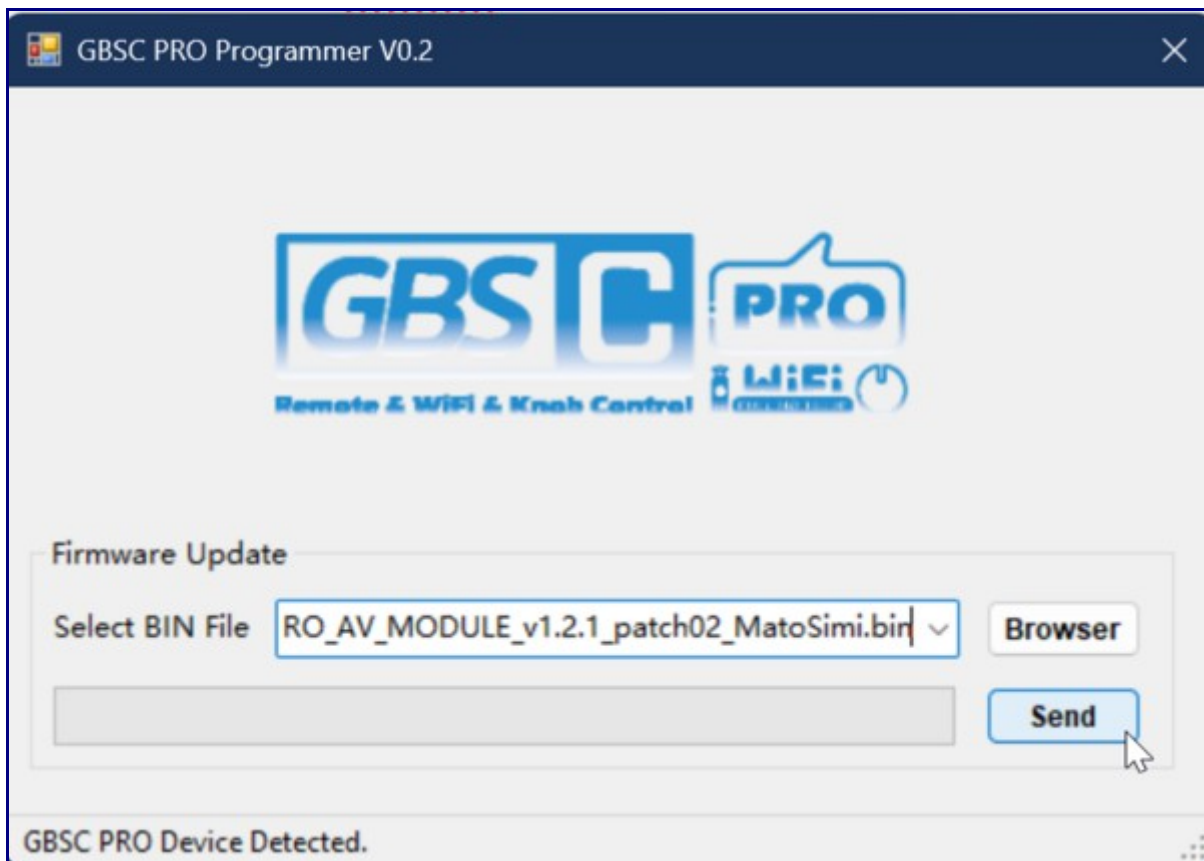
3. Download my release from here: <https://github.com/matosimi/gbesc-pro/releases> currently it is v1.2.1_patch02_matosimi, go for zip file

gbescpro_firmware_1_2_1_patch02_matosimi.zip

4. unzip both zip files, you will use EXEcutables from the official release and Firmware BIN files from my release
5. turn off the GBSC-Pro with the power switch, unplug everything (including the power cord) from GBSC-Pro and just plug in the microusb cable to it.
6. start NodeMCU-PyFlasher.exe that you can find in the 1st zip file, plug in the other side of microusb cable to you PC.
7. GBSC-Pro LED should swiftly flash and some serial port should appear in the dropdown.
8. Browse for the ino.bin firmware from 2nd zip file (my release):



9. press "Flash NodeMCU" button
10. wait a minute to finish.
11. unplug the microusb cable from GBSC-Pro and also from PC, close the PyFlasher app
12. open GBSC_PRO_Programmer.exe from the 1st zip file
13. plug in the usb-c cable into GBSC-Pro, press (and hold) small black BOOT button next to usb-c port and connect the other side of the cable into PC. once connected, release the boot button.
14. you should hear the "connection beep", retroscaler logo in GBSC_PRO_Programmer.exe app turns blue, GBSC-Pro LED slowly flickers green/red.
15. click the "Browser" button and browse for my AV firmware from 2nd zip file:



16. press Send button, wait ~10 seconds to finish.
17. unplug the usb-c cable from GBSC-Pro
18. plug in all needed... so svideo/composite, RCA audio, DC power, hdmi connected to the monitor
19. push the power button, select S-Video PAL input and enjoy.