

How to Update Atari 2600+

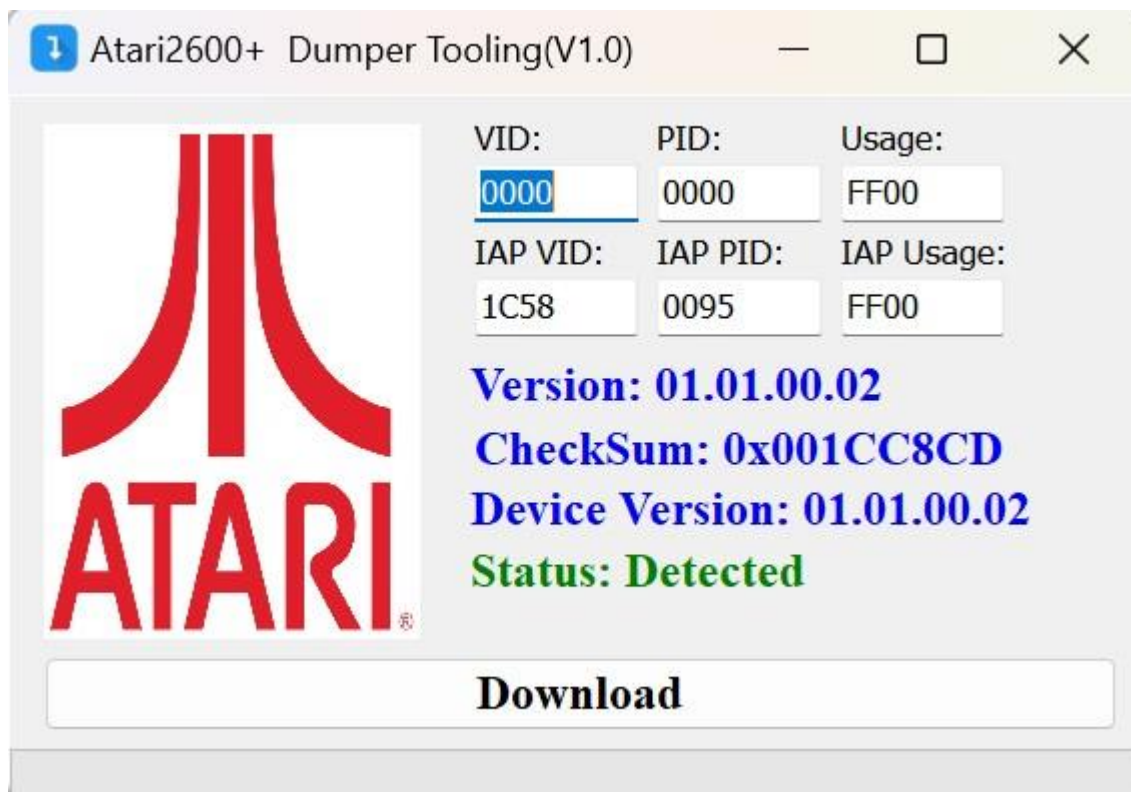
Dumper:

With Power Switch off on the 2600+ connect the USB lead from the 2600+ to a Windows Laptop/PC.

TV TYPE lever in B W

Hold down GAME SELECT lever and power on the 2600+, You should hear a windows connection jingle from your Laptop/PC

Open AtariDumper1.1.0.2.exe, You should see the status as Detected in green text.



Press Download and it takes about 5 seconds to flash the dumper chip. The status then goes to red not detected and that's it the dumper chip is updated.

How to Update

Emulator Part 1:

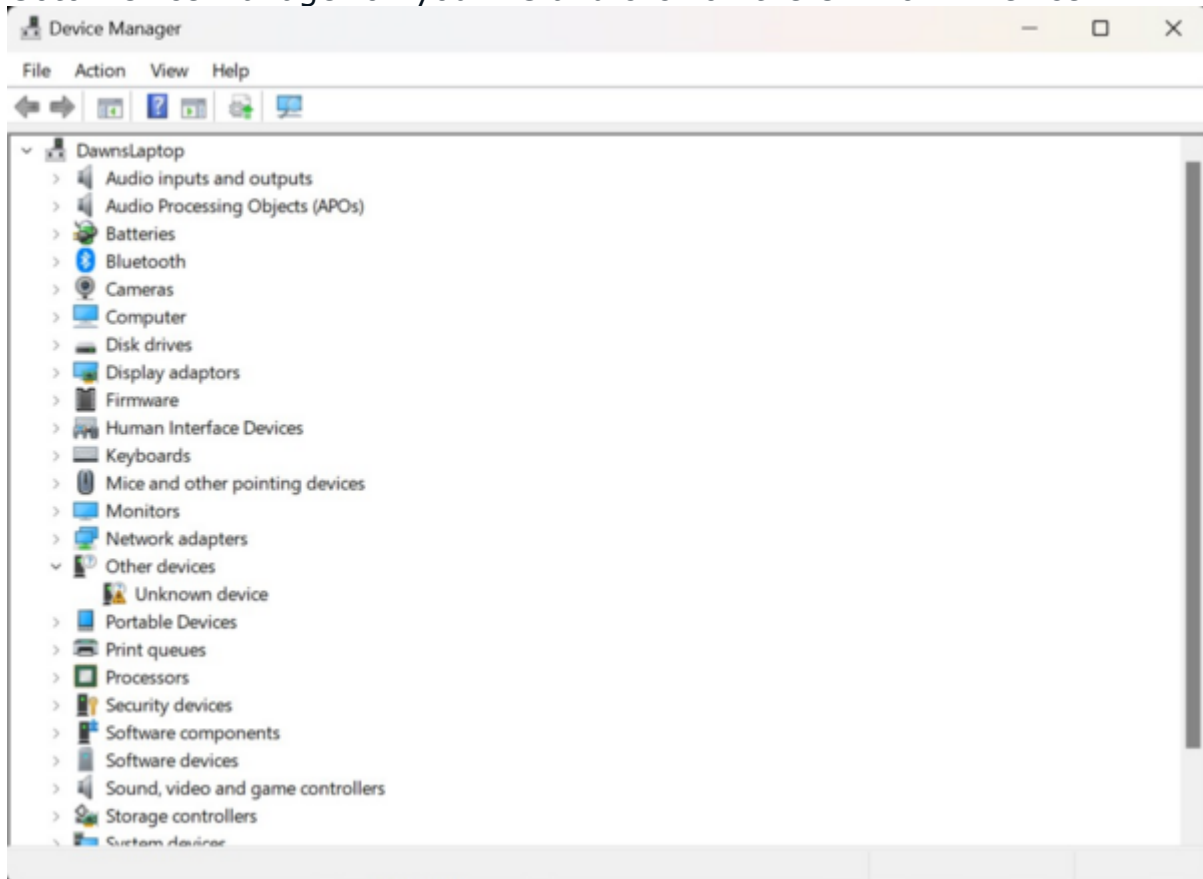
The machine needs to add a driver to your Laptop/PC to talk to the 2600+. You only need to do this once.

With Power Switch off on the 2600+ connect the USB lead from the 2600+ to a Windows Laptop/PC.

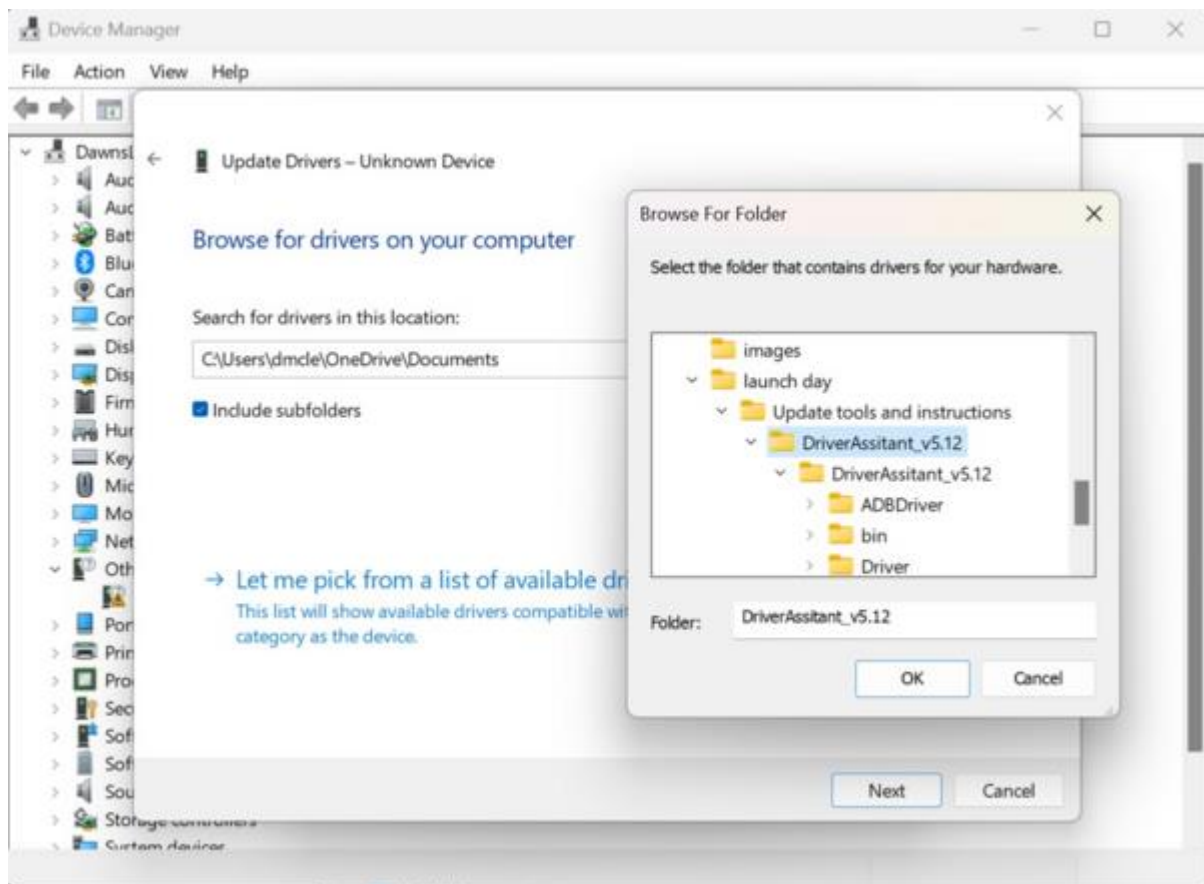
TV TYPE lever in COLOR

Hold down GAME RESET lever and power on the 2600+, You should hear a windows connection jingle from your Laptop/PC

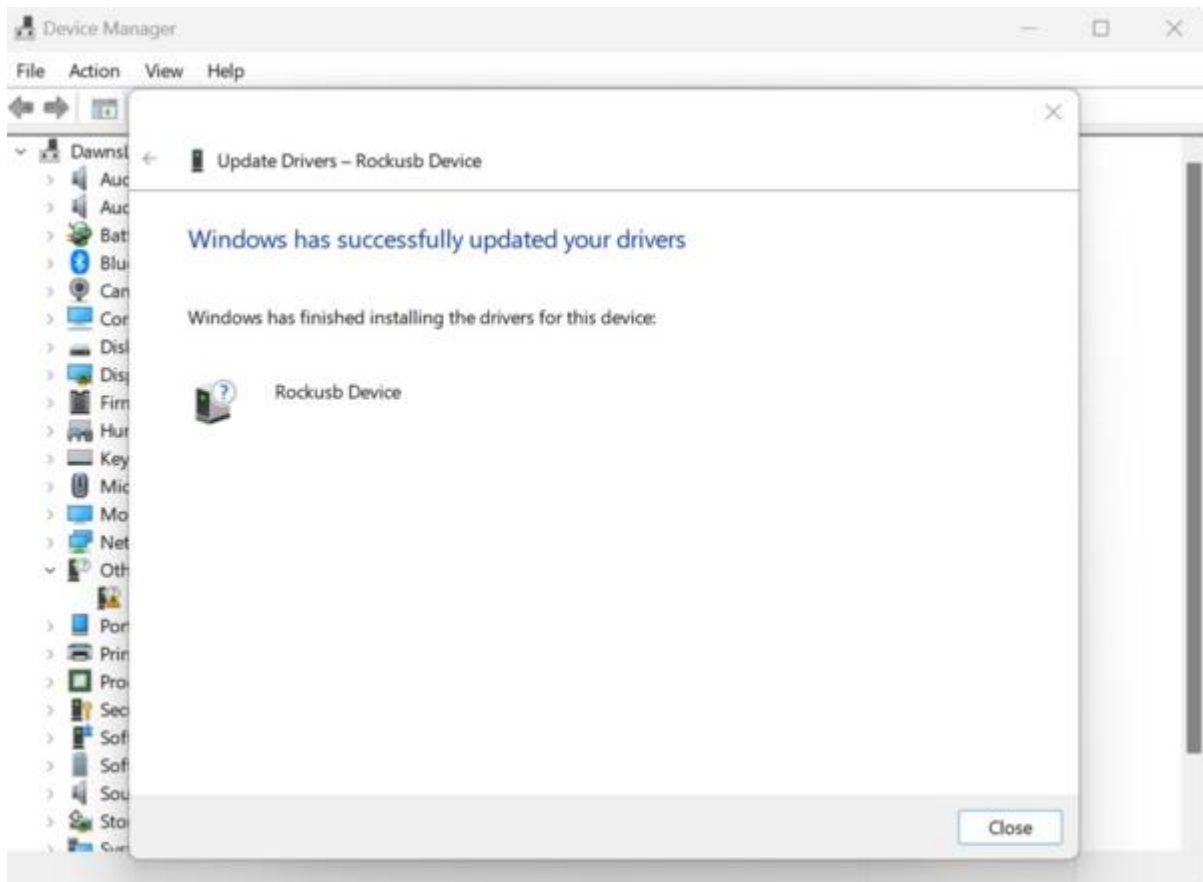
Goto Device Manager on your PC and click on the Unknown Device.



Browse your PC and click on the DriverAssitant_v5.12 (unzipped) and press Open.



A confirmation message should pop up showing a successful driver update.



Should take you no more than two minutes to do this.

Emulator Part 2:

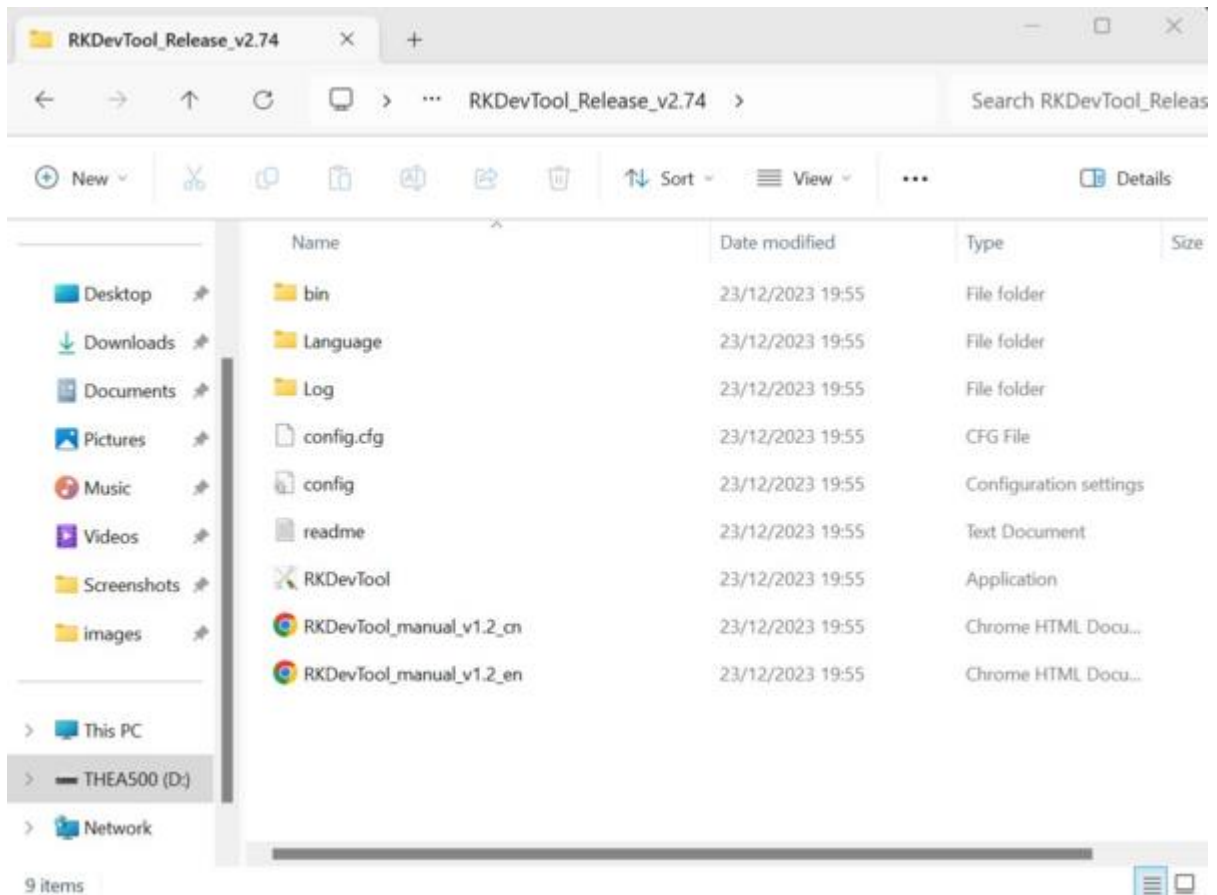
Now for the actual emulator firmware update.

With Power Switch off on the 2600+ connect the USB lead from the 2600+ to a Windows Laptop/PC.

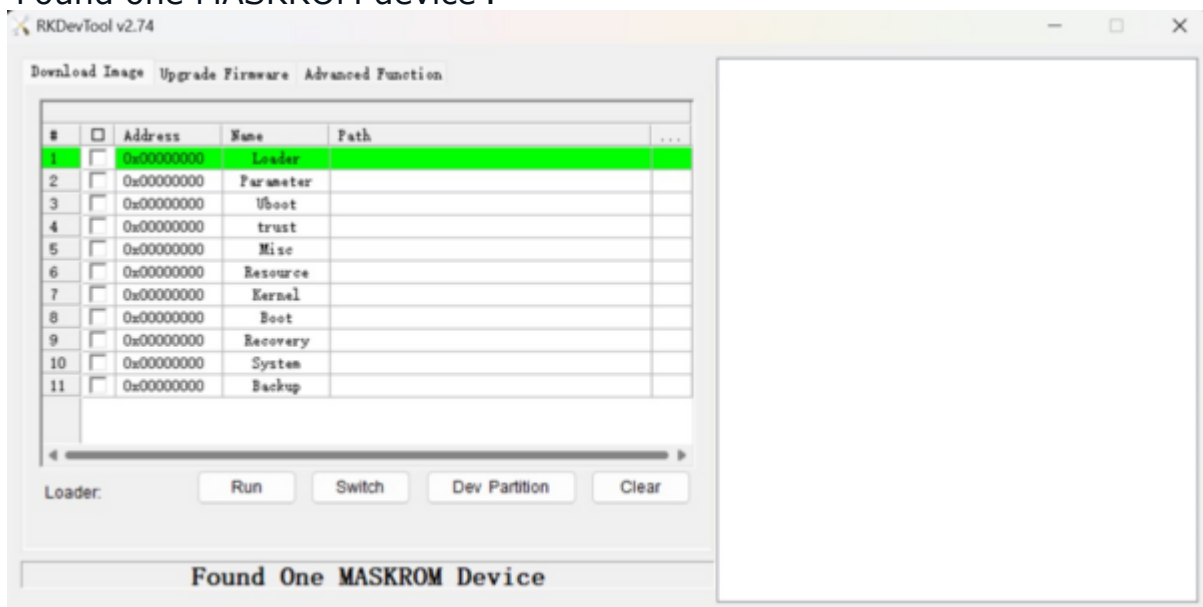
TV TYPE lever in COLOR

Hold down GAME RESET lever and power on the 2600+, You should hear a windows connection jingle from your Laptop/PC

Open up RKDevTool_Release_v2.74 folder (unzipped) and click on RKDevTool.exe.



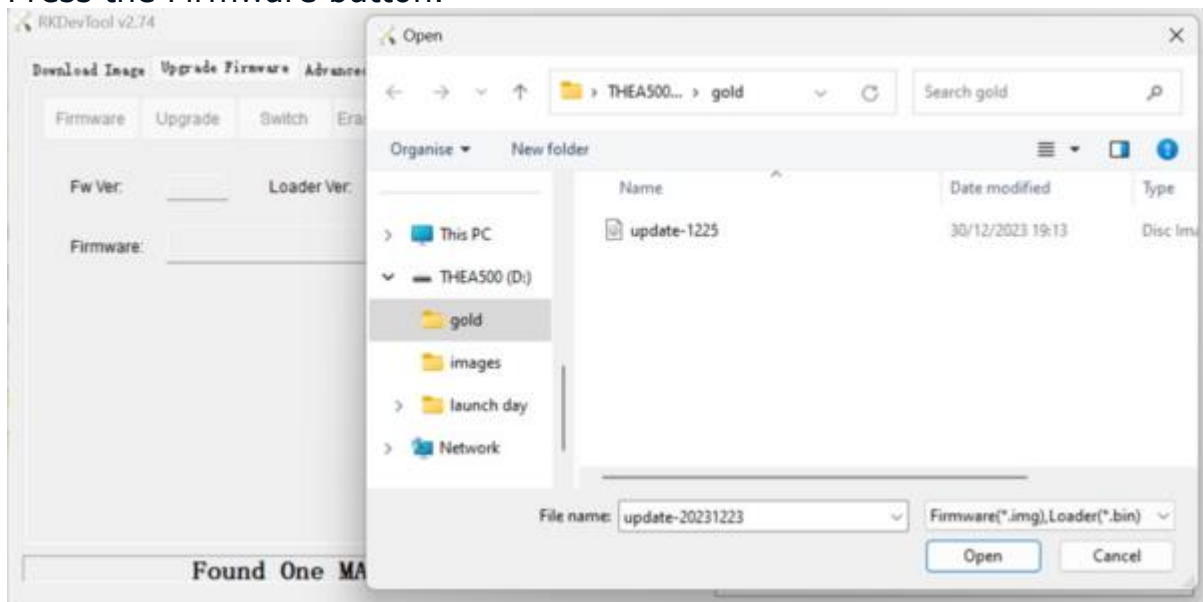
You should see the application window open and a status message of 'Found one MASKROM device'.



Press the tab Upgrade Firmware.



Press the Firmware button.



Find Update-1225.img and press Open.



You should see the IMG prepped in the window. Press Upgrade.



The update uploads in about 30 seconds. The whole process should again take about 2 minutes.

And that's everything done. Time to plug your carts in!

John Hancock has already provided a list of working 7800 homebrews, so unless you just want to play those games for fun I'm more interested in receiving feedback for games he didn't test and anything else of note.

Bear in mind this is a beta and the purpose of offering this out on Atari Age is because of the breadth of cartridges out there that we internally just don't have easy access to - such a massive number of carts with all their variations. I'm confident that this update will please, but some

things may not work still, and others haven't been looked at like video touch pad, driver controller support as well as 2600 homebrew, a few odd carts and that one tricky official release Pitfall II. But we will as soon as the 1.1 is locked.

Thanks Ben – PLAION.