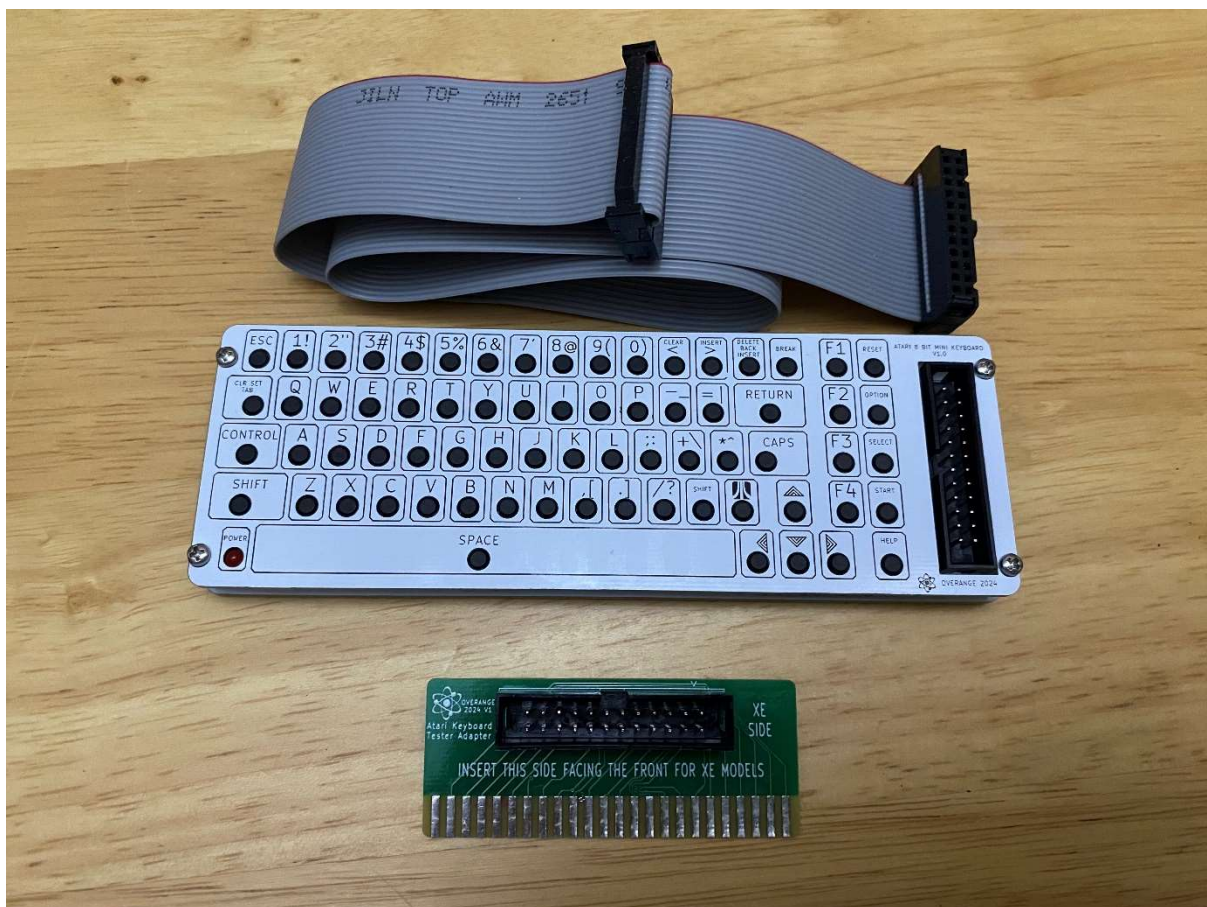




Atari A8 Mini Keyboard Manual



Date:-09/02/24

Issue:-1.1



Contents

Document History 2

Introduction 3

Compatibility..... 3

What is the Atari A8 Mini Keyboard 3

Parts List / BOM 4

 Options..... 4

Build Instructions 5

 1. Tools Required 5

 2. Fit the Tactile Switches 5

 3. Fit LED 5

 4. Put both halves together 6

 5. Solder the Keyboard..... 7

 6. Assemble Adapter PCB..... 7

Testing..... 8

Problems?? 9

DO and DO NOTS 9

EXTRAS 9

ORDERING INFO 10



Document History

Document History			
Issue	State / Changes	Date	Author
1.0	First Draft	14/01/24	Overange
1.1	Revisions to Keyboard Artwork and design	09/02/24	Overange



Introduction

This guide is used to show how to build and use the Atari A8 Mini Keyboard.

Instructions and parts lists are included.

This Self Build kits are for those with the skills to build it themselves, I am not responsible for any damage caused by poor build quality and or misuse of this device.

Compatibility

The Atari A8 Mini Keyboard is compatible with the following Atari 8Bit systems.

800XL and Freddie variant

600XL

65XE

130XE

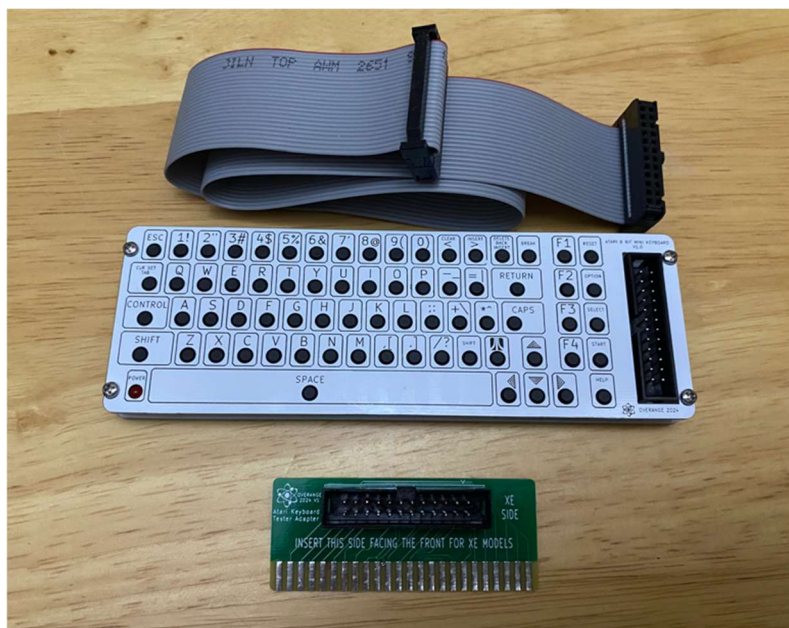
800XE

XEGS NOTE:- keyboard to be plugged into external XEGS keyboard and not main board, be aware Reset, Select, Option and Start will not function.

What is the Atari A8 Mini Keyboard

The Atari A8 Mini Keyboard is designed to help when working on Atari Mother Boards more convenient and not have the main keyboard balanced whilst trying to fault find, test or more.

The Supplier adapter is design to work on both XL and XE Model, its screen printing indicates which side to use for each model.

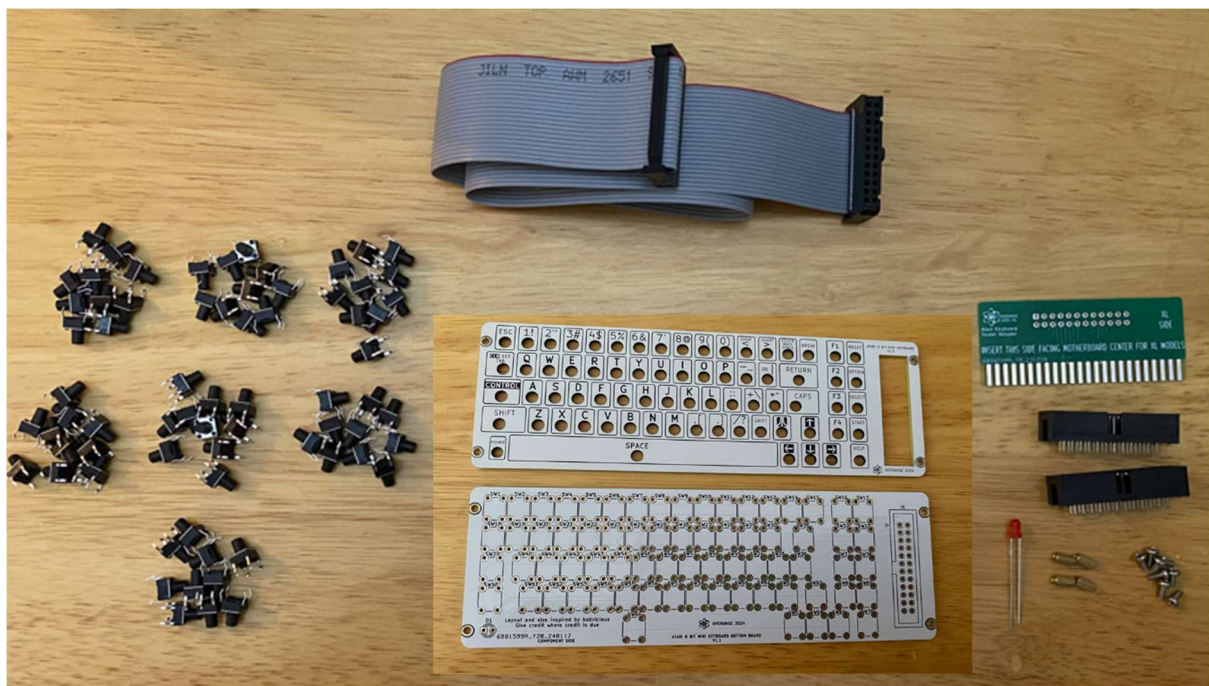




Parts List / BOM

The following is the list of parts needed to build the Mini Keyboard.

1	Mini Keyboard PCB Top section
2	Mini Keyboard PCB bottom section
2	Double Side Adapter for both XL and XE Models
3	70x 6X6X8mm 4Pin Tactile Push Button Switches
4	1x 3mm round LED
5	2x 24 pin IDC MALE 2.54mm PCB Connector
6	4x M2 x 6mm Threaded Brass Standoffs
7	8x M2 x 4mm Posi Pan Head Screws
8	400mm 24 pin IDC Ribbon cable with IDC Female connector both ends



Options

1. Complete Built Kit – Fully built and Tested
2. Complete Kit – To build your own.
3. Bare PCBs

Contact myself for more information on ordering KITS and Pre Built Keyboards.



Build Instructions

Before building, ensure you have all the skills, parts and the following tools.

1. Tools Required

- Side Cutters
- Small Flat File
- Posi Screwdriver
- Soldering Iron

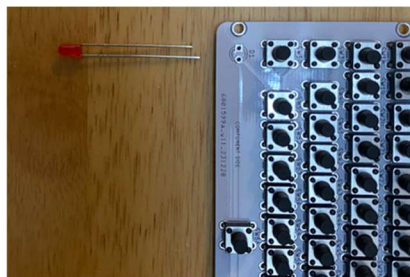
2. Fit the Tactile Switches

Fit all 70 Switches on to the Board



3. Fit LED

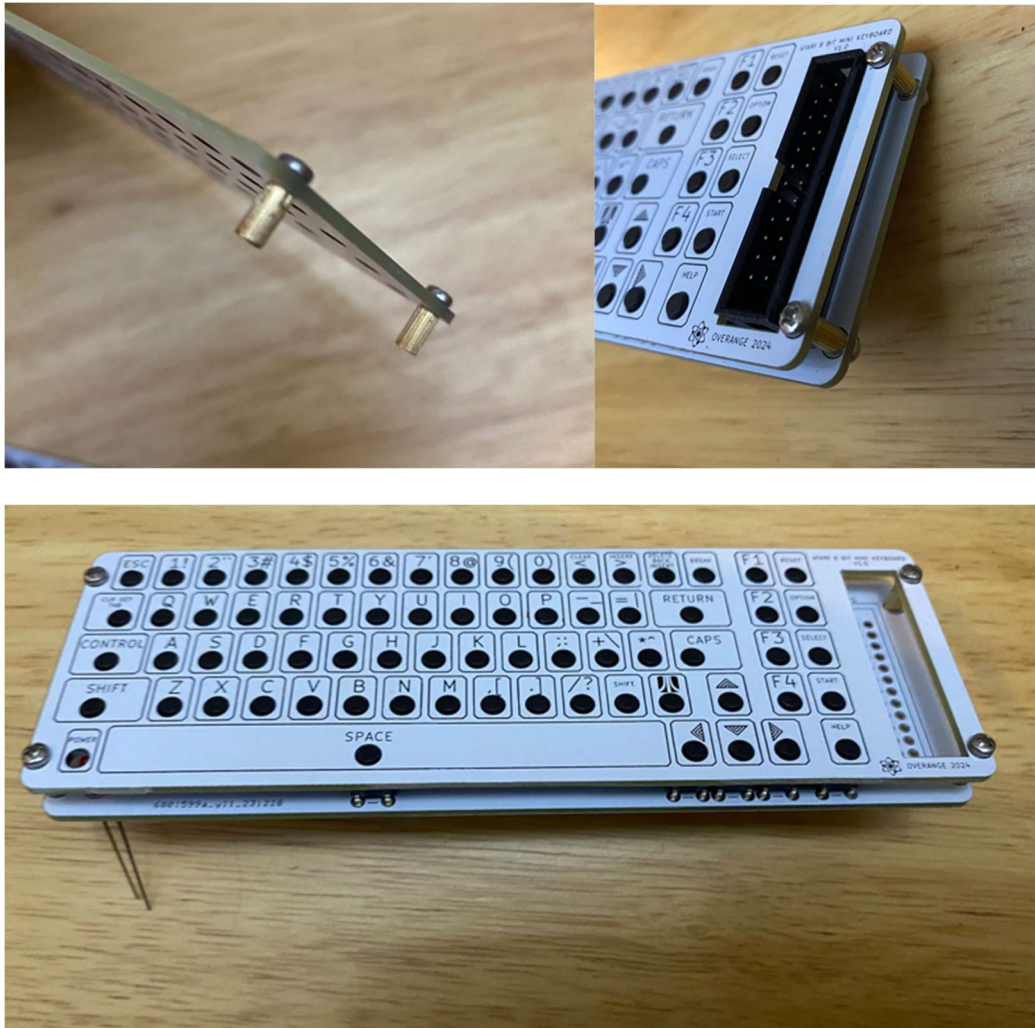
Fed the LED through its holes, Short lead or Flat edge to the Left side.





4. Put both halves together

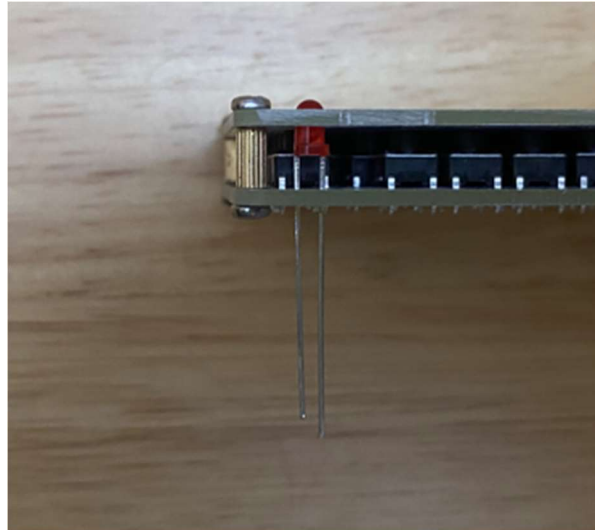
Fit the spacers and screws and put both halves together, this will aid in ensuring when the Keyboard is being soldered, all the switches fit correctly and should not catch when pressed.





5. Solder the Keyboard

Firstly ensure all parts are seated correctly before soldering, Positioning the LED to the desired Height, then continue with soldering all parts to the board, including the 24 pin IDC Header.



6. Assemble Adapter PCB

Fit the 24 pin IDC to the Adapter as per silk screen

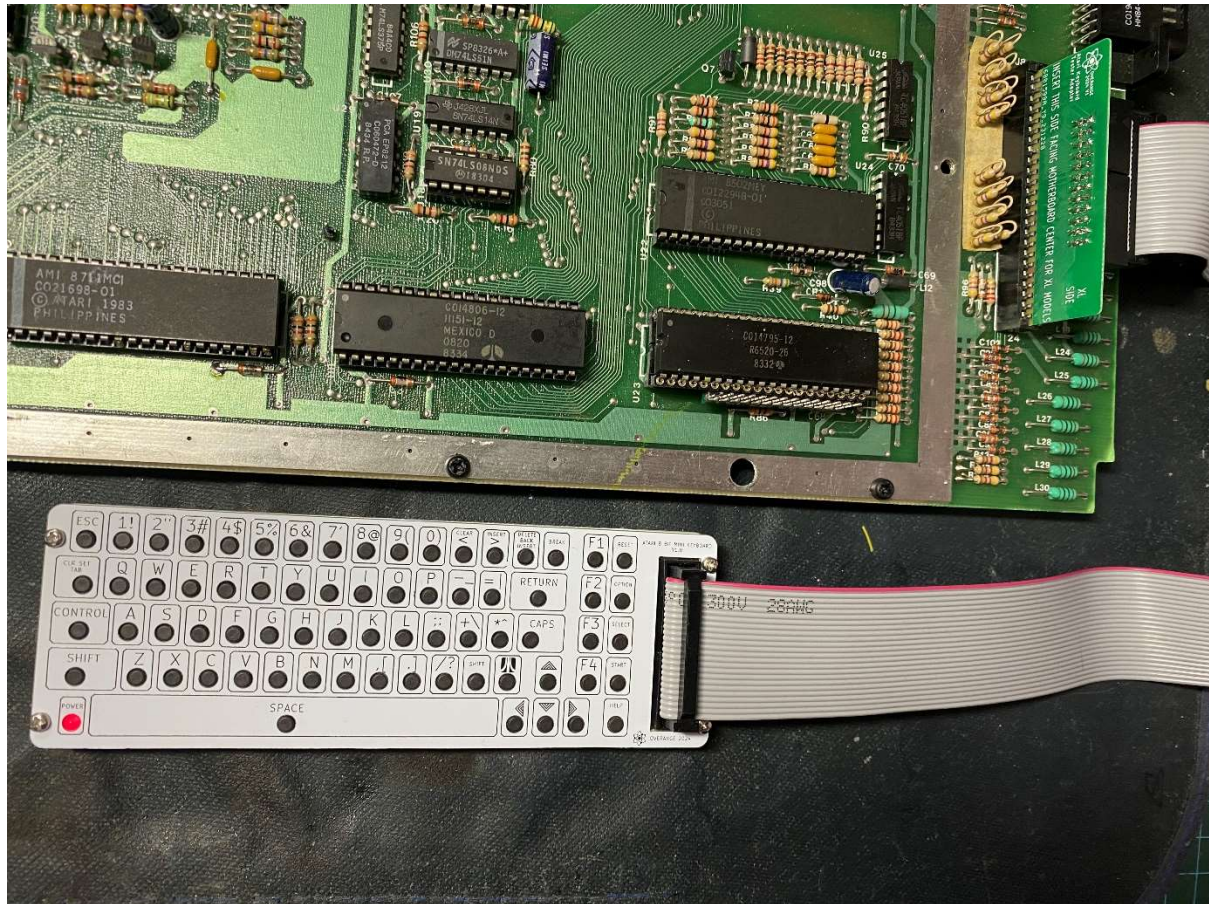




Testing

Once assembled and Cleaned, simply plug the Ribbon cable into the Adapter and Keyboard.

Plug the Adapter into the Atari Main Board Keyboard Connector, in the direction as indicated.



Power on you Atari and your Mini Keyboard will be ready for use.

PLEASE NOTE:- If you are building this KIT, I am not responsible for poor soldering or assembly skills.



Problems??

If it fails to operate fully, perform the following:-

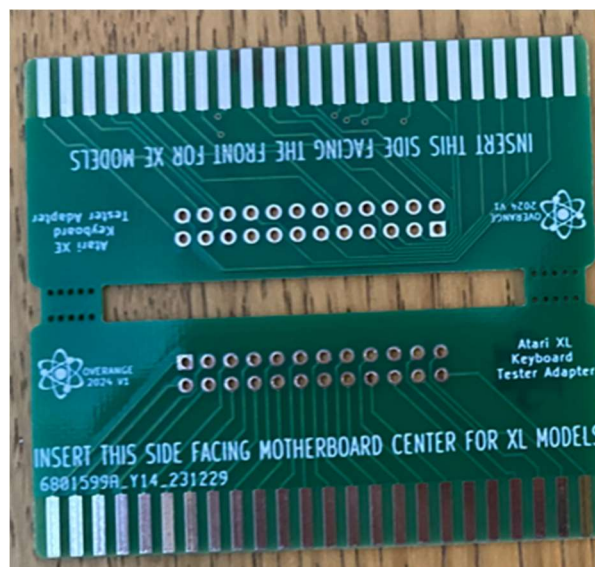
- Check all solder joints.
- Check Ribbon cable is not damage.
- Check adapter PCB is inserted correctly.
- NOTE:- If your Atari has a later after market Keyboard Connector, Check it does not have double side pin contacts, this is where the contact pad goes around both side if the ribbon. If it does, do not use the double sided connector, I also have a Single Sided Version available, please see Extras

DO and DO NOTS

- Do Not plug in Live
- Do not place Keyboard on a conductive surface
- Make sure its plugged in correctly before use
- Plug in and unplug adapter with care, its very then and can break.

EXTRAS

Aswell as the Double sided PCB there is a Single Sided Adapter, in KIT Form it come as a single PCB ready to be split and assembled.





ORDERING INFO

Please Contact me through Either

ATARIAGE.COM – User ID OVERANGE

Email:-

Website:- <https://overange.weebly.com/>

Design and original layout, size and all inspired by the whole Atari community, bobriclous, beebblebrox, and many more

Give Credit where credit is due.